

PART OF THE N.1/2, OF SECTION 4, T.6N., R.1W., &
PART OF THE S. 1/2 OF SECTION 33, T.7N., R.1W., S.L.B. & M.
GREENFIELD SUBDIVISION PHASE 1

TAXING UNIT: 10

IN NORTH OGDEN CITY

SCALE 1" = 50'

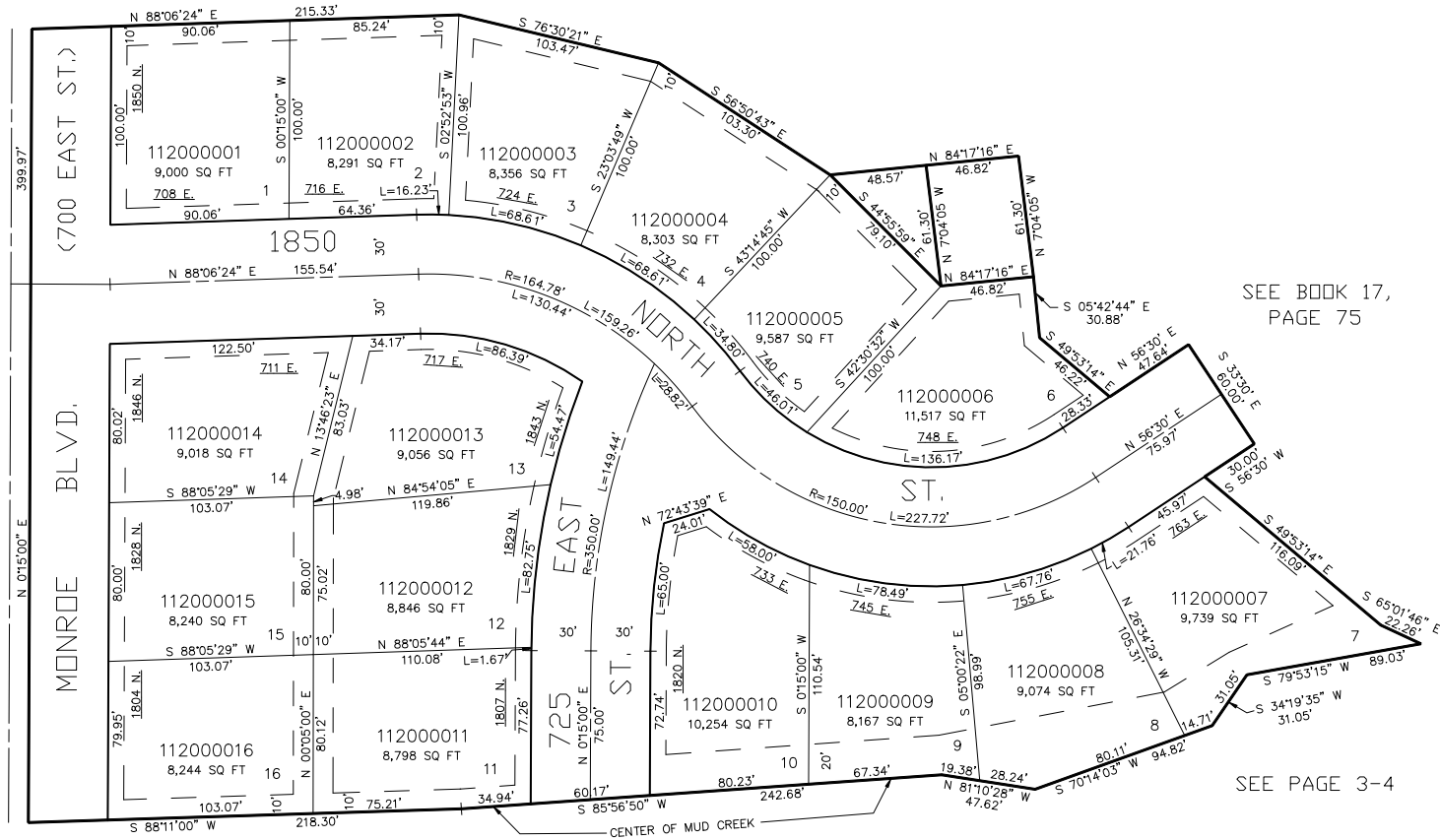
SEE BOOK 17, PAGE 76

SEE BOOK 17, PAGE 75

SEE PAGE 3-4

SEE PAGE 4

FOR COMPLETE ENG DATA SEE
ORIGINAL DEDICATION PLAT IN
BOOK 26, PAGE 66 OF RECORDS.



7' UTILITY & DRAINAGE EASEMENTS EACH
SIDE OF PROPERTY LINES AS INDICATED
BY DASHED LINES EXCEPT AS OTHERWISE
SHOWN.